



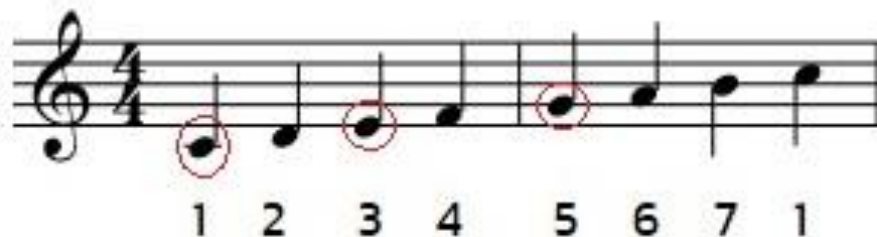
# Band Arranging

## LEARNING MANAGEMENT SYSTEM

# Chapter 2

## Chord

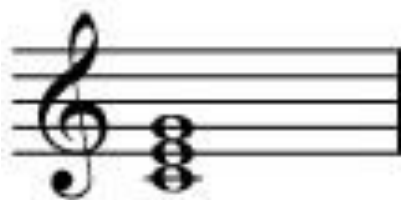
Chord is group of note from 3 note or more. The structure create from 1<sup>st</sup> 3<sup>rd</sup> 5<sup>th</sup> in scale, such as in a key of C major chord start from C is a 1<sup>st</sup> note E is 3<sup>rd</sup> and G is 5<sup>th</sup>



## ▪ Type of chord

Chord has separate in 4 types

- Major chord the structure between 1<sup>st</sup> to 3<sup>rd</sup> is Major 3<sup>rd</sup> between 3<sup>rd</sup> to



- Minor chord the structure between 1<sup>st</sup> to 3<sup>rd</sup> is Minor 3<sup>rd</sup> between 3<sup>rd</sup> to 5<sup>th</sup> is Major 3<sup>rd</sup>



## ▪ Type of chord

Chord has separate in 4 types

- Diminished chord the structure between 1<sup>st</sup> to 3<sup>rd</sup> is Minor 3<sup>rd</sup> between 3<sup>rd</sup> to 5<sup>th</sup> is Minor 3<sup>rd</sup>

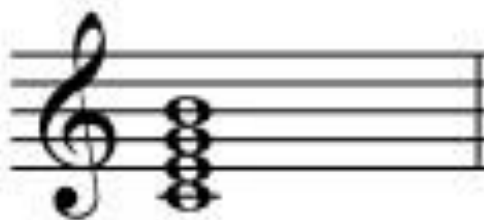
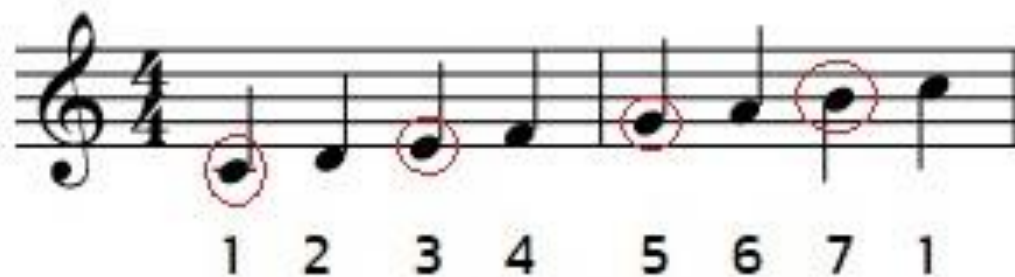


- Augmented chord the structure between 1<sup>st</sup> to 3<sup>rd</sup> is Major 3<sup>rd</sup> between 3<sup>rd</sup> to 5<sup>th</sup> is Major 3<sup>rd</sup>



## ■ Tension Chord

Tension chord is addition a new note to the chord to change a feeling and motion such as, put the 7<sup>th</sup> in triad.



## ▪ Syllable of chord

Major	Maj	$\triangle$	
Minor	m	-	
Diminished	Dim	0	-b5
Augmented	Aug	+	

## ▪ Chord Progression

Is the movement of chord from 1<sup>st</sup> chord to 2<sup>nd</sup> chord. Most used

Dominant motion is from V to I



## ■ 1<sup>st</sup> Example

Dominant motion V to I



## ■ 2<sup>nd</sup> Example

Dominant motion ii to V



Dm

G7

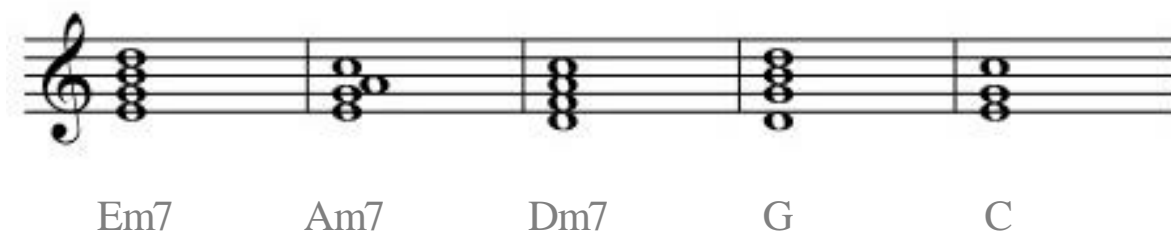


Am7

D7

## 3<sup>rd</sup> Example

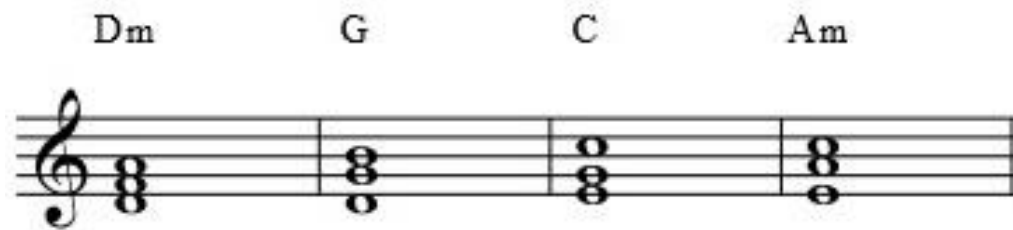
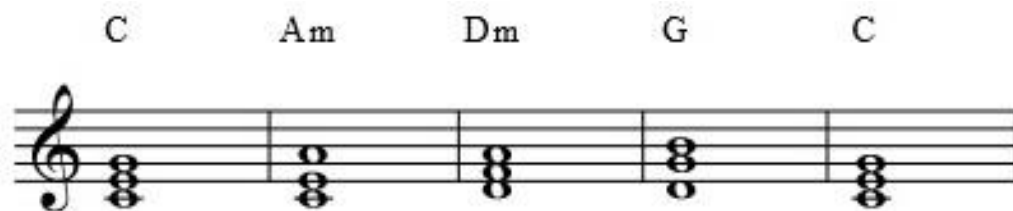
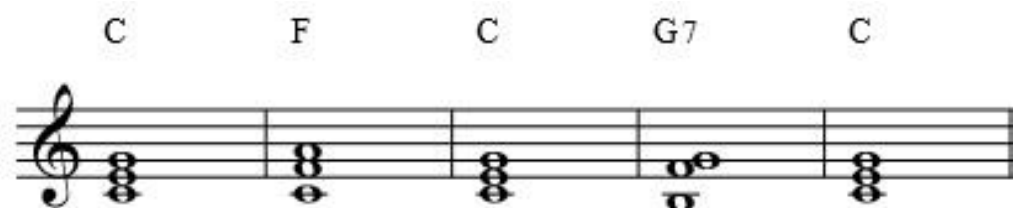
Connect between dominant



## ■ Chord Pattern

Chord pattern is a movement of chord and set to a group for easy to use. Can be make a chord pattern from listening and analysis, the people who's listen and play more music they will know more pattern of chord.

## Example



## ▪ Example

12 Bar Blues in F major

F <sub>7</sub>	B <sup>b</sup> <sub>7</sub>	F <sub>7</sub>	F <sub>7</sub>	
B <sup>b</sup> <sub>7</sub>	B <sup>b</sup> <sub>7</sub>	F <sub>7</sub>	F <sub>7</sub>	
G <sub>-7</sub>	C <sub>7</sub>	F <sub>7</sub> D <sub>7</sub>	G <sub>7</sub> C <sub>7</sub>	

## ■ Assignment

Create chord from the question assignment.

