



Band Arranging

LEARNING MANAGEMENT SYSTEM

Chapter 3

Bass line

Bass is a lower note and is an Important elements of music. The movement of bass will make the music has more colorful.

Creation of bass motion depends on many components such as chord, rhythmic, style and the other.

▪ Style

Depend on style of music. In the each of music has many different style whether it be Bossa nova, Swing, Reggae, Disco and the other, bass will move on that style.

Example

Bossa nova

Am7 Am7 Dm7 Dm7

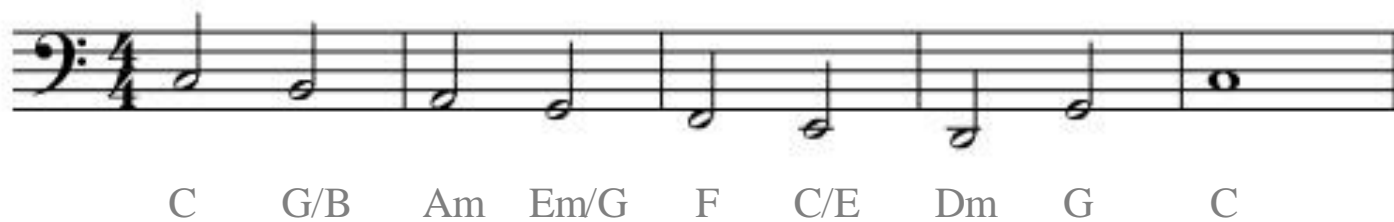


Disco

Am7 Dm7 G C

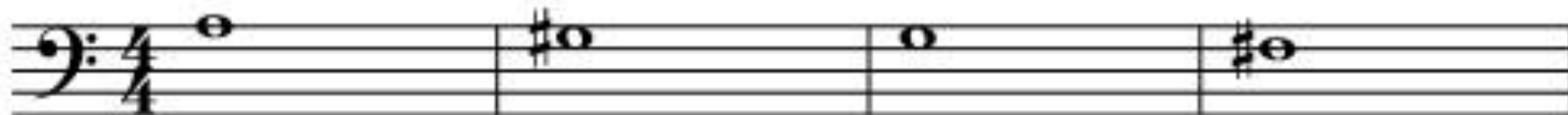


▪ Scale



■ Chromatic Scale

Am AmM7 Am7 F#dim7



▪ Arpeggio



▪ Pedal tone

Pedal tone is holding the sound even though the chord has change, same the piano pedal.



Walking Bass

Walking Bass is like an improvisation, but mostly on the down beat with chord bass is on the root.



The image displays two staves of musical notation for a walking bass line in 4/4 time. The first staff shows a sequence of chords: C, Am, Dm, G. The second staff shows a sequence of chords: C, Am, Dm, G, C. The notation includes notes and rests on a bass clef staff, with chord symbols placed above the notes.

■ Assignment

- Writing bass line in different style from question (from assignment in LMS)
- Create the walking bass line from question (from assignment in LMS)

