



Band Arranging

LEARNING MANAGEMENT SYSTEM

Chapter 6

Four Parts

Four parts is a base of music arrangement before expand to orchestration. We will learning about voice crossing, chord inversion, pitch of sound and the other, That's make easy to orchestration and manage balance of sound.

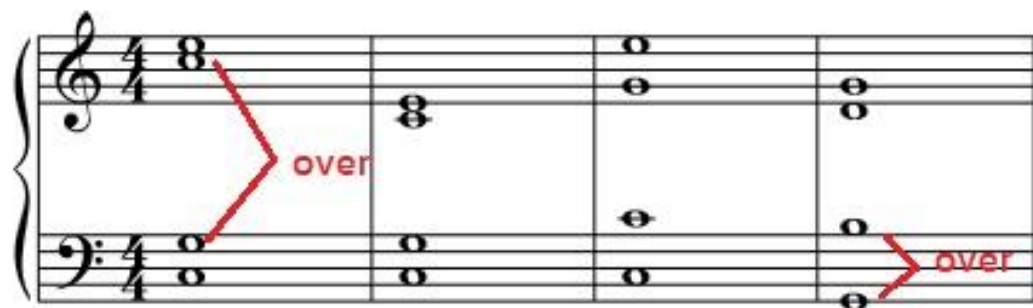
▪ Basic

Four parts structure including Soprano, Alto, Tenor and Bass, have an 3 important rules.

- Over octave
- Overlap
- Parallel 5th and 8th

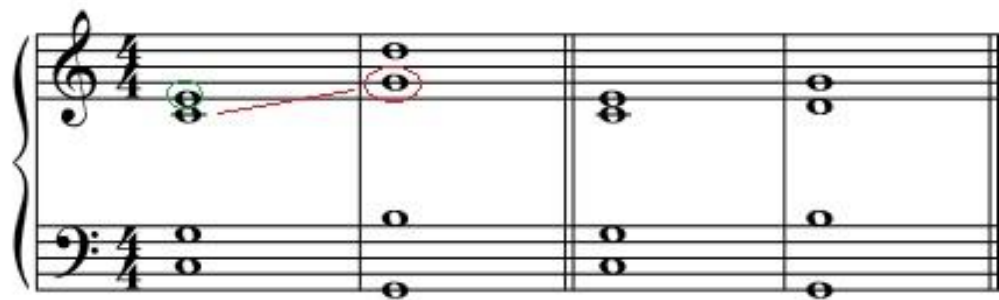
- rule

Over Octave



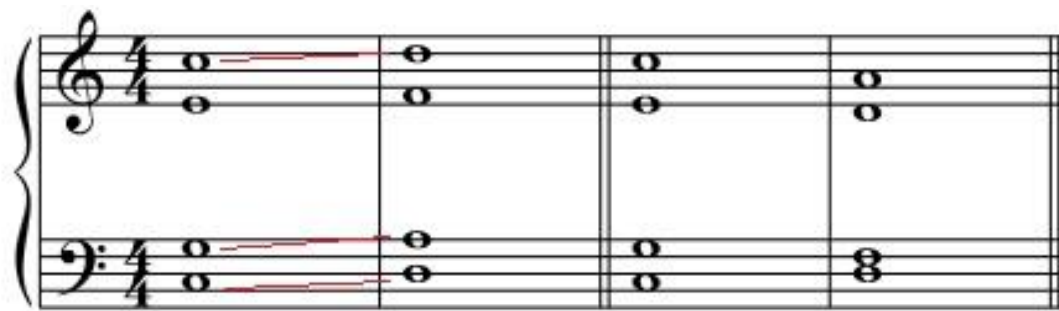
- rule

Overlap



- rule

Parallel 5th and 8th



■ Assignment

Arrange the popular music on piano score or 4 parts ensemble score by all the things you has learned.

