



มหาวิทยาลัยราชภัฏนครปฐม  
NAKHON PATHOM  
RAJABHAT UNIVERSITY  
佛统皇家大学

Faculty of Humanities and Social Sciences

人文与社会科学学院

申焯

Course code: 2913243

Course name: ภาษาจีนสำหรับมัคคุเทศก์

Chinese for Tourist Guides

导游汉语 Dǎoyóu Hànyǔ

Teacher:

Aj. Shen ye 申烨





Dì jiǔ kè Dǎoyóu jièshào xíngchéng  
第九课 导游介绍行程

Lesson 1 Itinerary introduction by tour guide.

New words  
生词

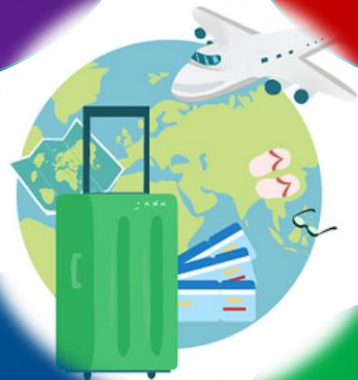
Conversation  
课文对话

Language  
points  
语言点

Pronounce  
语音知识

Exercises  
练习

Culture  
points  
文化点滴







# Words 生词

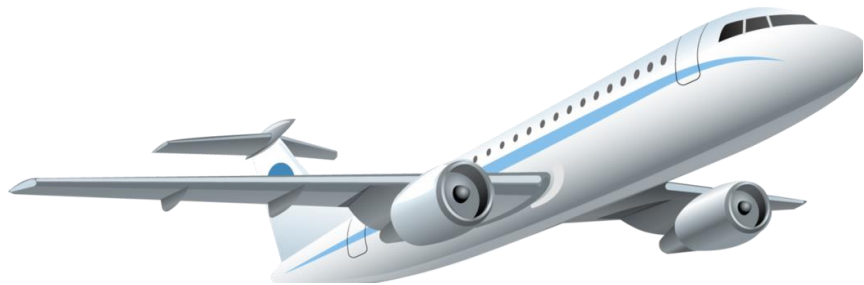
1	行程	xíngchéng	schedule
2	听	tīng	listen
3	大声	dàshēng	loudly
4	清楚	qīngchu	clearly
5	上岛	shàng dǎo	Go on the island
6	点	diǎn	o' clock
7	半	bàn	half
8	出发	chūfā	departure
9	船	chuán	boat
10	出海	chūhǎi	Go to sea





## Words 生词

11	分	fēn	minute
12	小声	xiǎoshēng	In a low voice
13	出发时间	chūfā shíjiān	Departure time
14	接送时间	Jiēsòng shíjiān	Pick up time
15	返回	fǎnhuí	Go back
16	从…到…	cóng…dào…	from…to…



# Conversation 会话huìhuà



(Bā diǎn bàn shàng chē! 导游介绍行程)

- Dǎoyóu: Gèwèi, wǒ xiān jièshào yíxià míngtiān de xíngchéng.
- 导游: 各位, 我先介绍一下明天的行程。
- Yóukè: Qǐng dàshēng yīdiǎnr! Wǒmen tīng bù qīngchu!
- 游客: 请大声一点儿! 我们听不清楚!
- Dǎoyóu: Wǒmen míngtiān shàngdǎo, 6 diǎn bàn jiàozǎo, 7 diǎn chī zǎofàn,  
• 8 diǎn bàn shàngchē!
- 导游: 我们明天上岛, 6点半叫早, 7点吃早饭, 8点半上车!
- Yóukè: Jǐ diǎn shàng chē? Qǐng zài shuō yíbiàn.
- 游客: 几点上车? 请再说一遍。
- Dǎoyóu: 8 Diǎn bàn! 8 Diǎn bàn chūfā qù mǎtóu, 10 diǎn shàngchuán chūhǎi!
- 导游: 8点半! 8点半出发去码头, 10点上船出海!



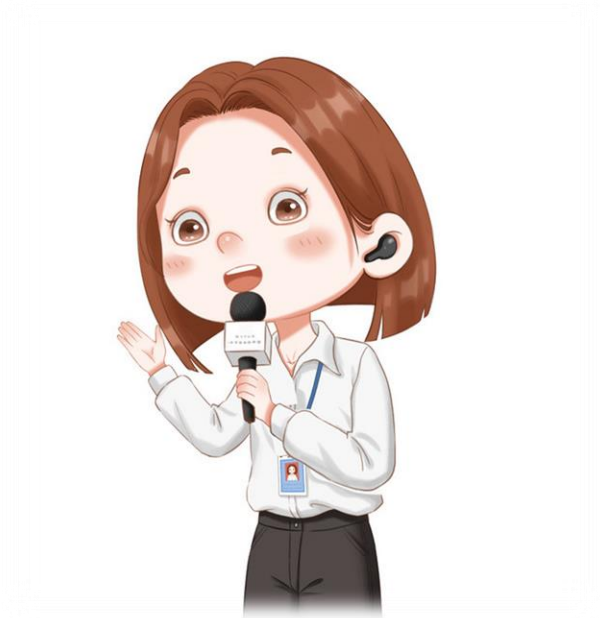


## Language Points 语言点 yǔyán diǎn

### 1. Introduce

- Dǎoyóu: Gèwèi, wǒ xiān jièshào yíxià míngtiān de xíngchéng.
- 导游：各位，我先介绍一下明天的行程。

wǒ xiān jièshào yíxià .....  
我先介绍一下.....。  
Let me introduce .....for you first.





## Language Points 语言点 yǔyán diǎn

### 2. Require:

- Qǐng dàshēng yīdiǎnr! Wǒmen tīng bù qīngchu!
- 请大声一点儿！我们听不清楚！

Means: Loudly please, we can not listen clearly.

It is use for show your meaning of require others to speak loudly.







## Language Points 语言点 yǔyán diǎn

### 3. Introduce the schedule

- Dǎoyóu: Wǒmen míngtiān shàngdǎo, 6 diǎn bàn jiàozǎo, 7 diǎn chī zǎofàn,
- 8 diǎn bàn shàngchē!
- 导游: 我们明天上岛, 6点半叫早, 7点吃早饭, 8点半上车!

6 diǎn bàn jiàozǎo, 7 diǎn chī zǎofàn, 8 diǎn bàn shàngchē!  
我们明天上岛, 6点半叫早, 7点吃早饭, 8点半上车!

The way to introduce the schedule is explanation the details of time, and something need do.

Number words. + diǎn + Verb.





## Language Points 语言点 yǔyán diǎn

### 4. Appellation:

Yóukè: Jǐ diǎn shàng chē? Qǐng zài shuō yíbiàn.

游客：几点上车？请再说一遍。



Jǐ diǎn shàng chē?

几点上车？

When we will get on transport?



## Language Points 语言点 yǔyán diǎn

### 5. Ask the time:

Yóukè: Jǐ diǎn shàng chē? Qǐng zài shuō yíbiàn.

游客：几点上车？请再说一遍。



Qǐng zài shuō yíbiàn.

请再说一遍。

Please speak it once again.



## Language Points 语言点 yǔyán diǎn

### 6. Introduce the schedule

- Dǎoyóu: 8 Diǎn bàn! 8 Diǎn bàn chūfā qù mǎtóu, 10 diǎn shàngchuán chūhǎi!
- 导游: 8点半! 8点半出发去码头, 10点上船出海!

8 Diǎn bàn chūfā qù mǎtóu, 8点半! 8点半出发去码头,  
10 diǎn shàngchuán chūhǎi! 10点上船出海!

The way to introduce the schedule and explanation the more details.

Number words. + diǎn + Verb.1 + Verb.2



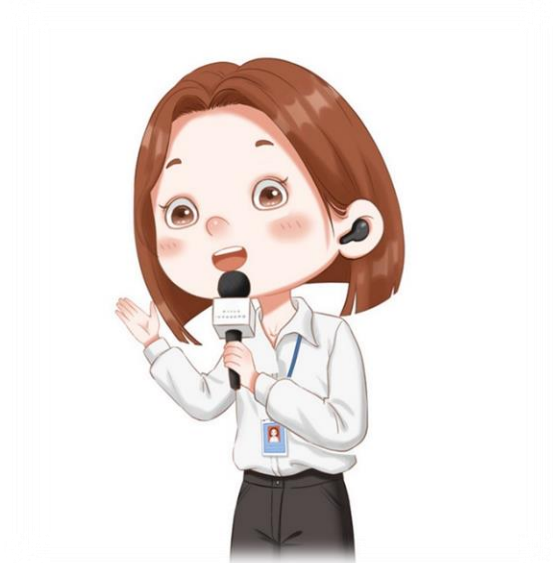




# Language Points 语言点 yǔyán diǎn

## 7. Speak the time

- |                      |                   |     |     |     |
|----------------------|-------------------|-----|-----|-----|
| • yī                 | èr                | sān | sì  | wǔ  |
| • 一                  | 二                 | 三   | 四   | 五   |
| • liù                | qī                | bā  | jiǔ | shí |
| • 六                  | 七                 | 八   | 九   | 十   |
| • 零 (0) líng         |                   |     |     |     |
| • No.1 + diǎn + No.2 |                   |     |     |     |
| • (hour              | minute)           |     |     |     |
| • 9:05:              | 9 diǎn líng 5 fēn |     |     |     |
| • 10:15:             | 10 diǎn 15 fēn    |     |     |     |
| • 10:30:             | 10 diǎn 30 fēn    |     |     |     |
| • 10:45:             | 10 diǎn 45 fēn    |     |     |     |





## Language Points 语言点 yǔyán diǎn

### 8. The different time in a day

凌晨	língchén	1-5.59
早上	zǎoshang	6-8.59
上午	shàngwǔ	9-11.59
中午	zhōngwǔ	12-12.59
下午	xiàwǔ	13-18.59
晚上	wǎnshang	19-23.59

- Zǎoshang 9 diǎn 28 fēn

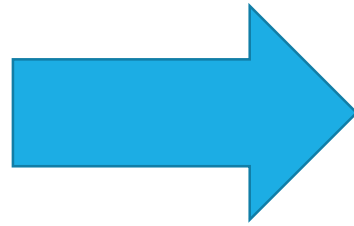




## Pronunciation Points 语音知识 yǔyīn zhīshi

### 1. The tonal modification of the third tone in Chinese

……点diǎn……分fēn



When we speak the time, we can use this sentence, and when the minute is more than ten, we don't need speak “分fēn”

9:14