



มหาวิทยาลัยราชภัฏนครปฐม
NAKHON PATHOM
RAJABHAT UNIVERSITY
佛统皇家大学

Faculty of Humanities and
Social Sciences

人文与社会科学学院

Aj. Dr. Shen Ye

申烨



มหาวิทยาลัยราชภัฏนครปฐม
Nakhon Pathom Rajabhat University

Course code: 2913245

Course name: ภาษาจีนเพื่อการสื่อสารอุตสาหกรรมบริการ

Chinese for Hospitality Industry

服务行业汉语

Fúwù Hángyè Hànyǔ

Teacher:

Aj. Dr. Shen ye 申烨





第二课课程介绍 Introduce for Lesson 2

- **Part 1: Text study**
 - In this course, I will introduce the basic knowledge about how to check-in a room at hotel. Then I will explanation the meaning and details of 12 new vocabularies, 1 conversation with 8 sentences, and the language points, pronunciation point and culture point in this course. And I will tell you the special way to ask the name in Chinese.
- **Part 2: Exercises**
 - Pleases try to do the exercise in the back of the text.
 - Pleases remember the words and sentences about Chinese for Hospitality Industry.



Dì èr kè Huānyíng guānglín
第二课 欢迎 光临
Lesson 2 Welcome !

New words
生词

Conversation
课文对话

Language
points
语言点

Pronounce
语音知识

Exercises
练习

Culture point
文化点滴



NOW

LET'S BEGINNING STUDY

PART 2 — EXERCISES.



Exercises 练习

一、看图猜词。 Guess the word from a picture.



Exercises 练习

一、看图猜词。 Guess the word from a picture.



Exercises 练习

二、看图在空格部分填入适当的词，使句子完整。 Look at the picture and fill in the blank with appropriate words to complete the sentence.



Kèrén lái _____ ná _____.

Exercises 练习

二、看图在空格部分填入适当的词，使句子完整。 Look at the picture and fill in the blank with appropriate words to complete the sentence.



A: Nínhǎo, zhèli shì qiántái, _____ Màngǔ
jiǔdiàn.

B: Nǐhǎo , wǒ tíqián _____ le.

Exercises 练习

二、看图在空格部分填入适当的词，使句子完整。 Look at the picture and fill in the blank with appropriate words to complete the sentence.



A: _____, nín _____? Hùzhào _____ le ma ?

B: Wǒ _____ Wáng, zhè shì wǒ de hùzhào, gěi nǐ.

Exercises 练习

二、看图在空格部分填入适当的词，使句子完整。 Look at the picture and fill in the blank with appropriate words to complete the sentence.



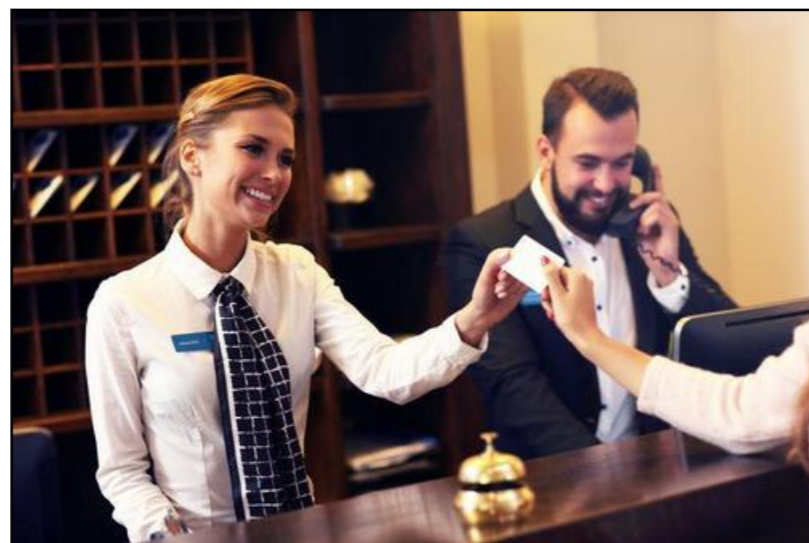
2

A: Wǒ kàn _____, …nín dìng le liǎng ge _____, zhù sān ge wǎnshang, duì ma?

B: _____, _____ sān wǎn, 19 hào _____.

Exercises 练习

二、看图在空格部分填入适当的词，使句子完整。 Look at the picture and fill in the blank with appropriate words to complete the sentence.

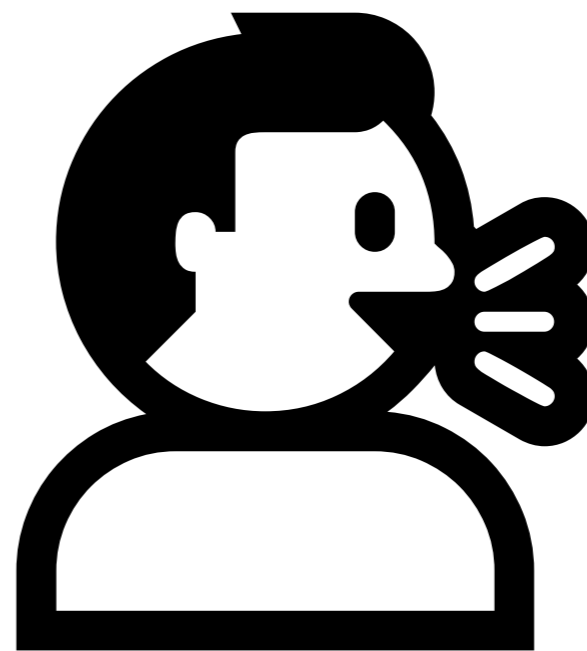
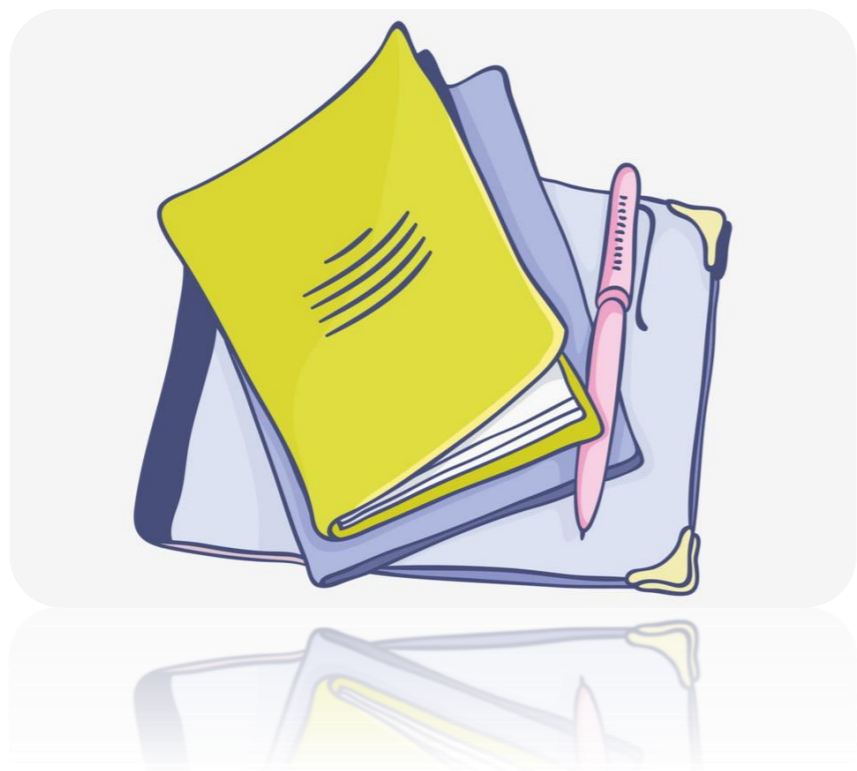


A: Zhè **shì** nín de _____, 601 _____ **hé** 749 fángjiān , wǎn' ān!

B: Xièxie.

Exercises 练习

三、用本文所学句子完成任务。 Finish the task with the sentences learned in this article.



Design the scene and check in at the hotel front desk.

设计场景，在酒店前台办理入住。