



มหาวิทยาลัยราชภัฏนครปฐม



Family Nursing



Assistant Professor Dr. Riam Namarak
Faculty of Nursing Nakhon Pathom Rajabhat University

Objective



**family nursing
concept**



**The role of
Community Nurses in
Family Care**



**Family-centered nursing
Family development
theory**



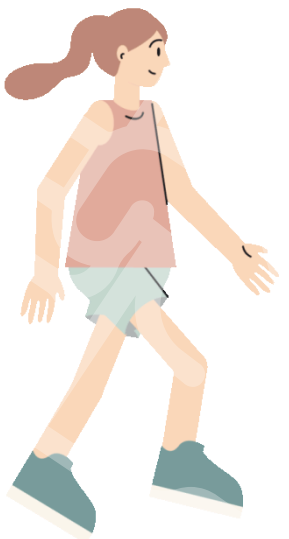
Strengthening family



**Home health care
and continuing care**



**Family nursing
process**





Family nursing concept



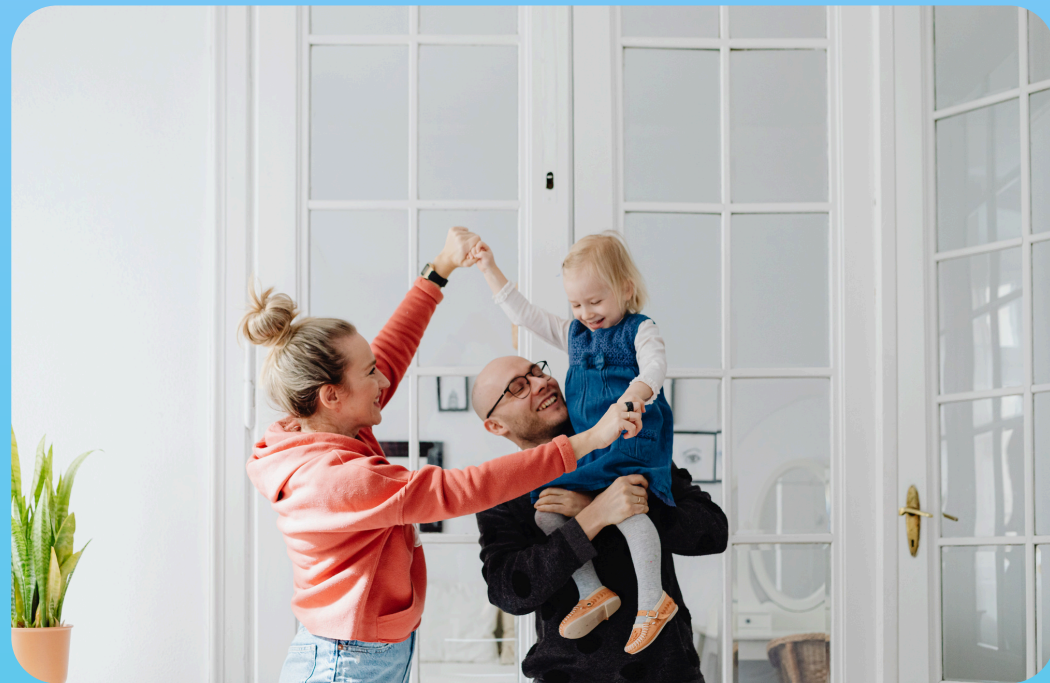
- Health services for family

- family participation in caregiving





family nursing concept



- A specialized nurse who works in taking care of the health of families and family members (Family as a Unit)
- integrated
- Holistic care
- family participation.
- Continuing care





First contact

Continuity

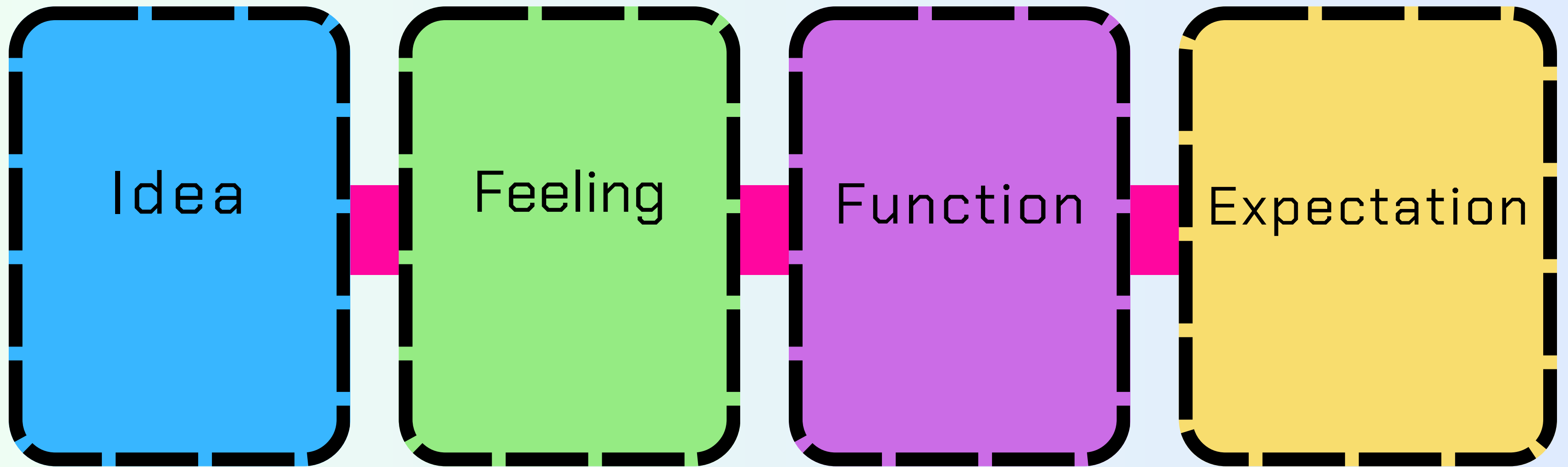
**Principles
of family nursing**

Comprehensive care

**Coordinated care
and referral system**



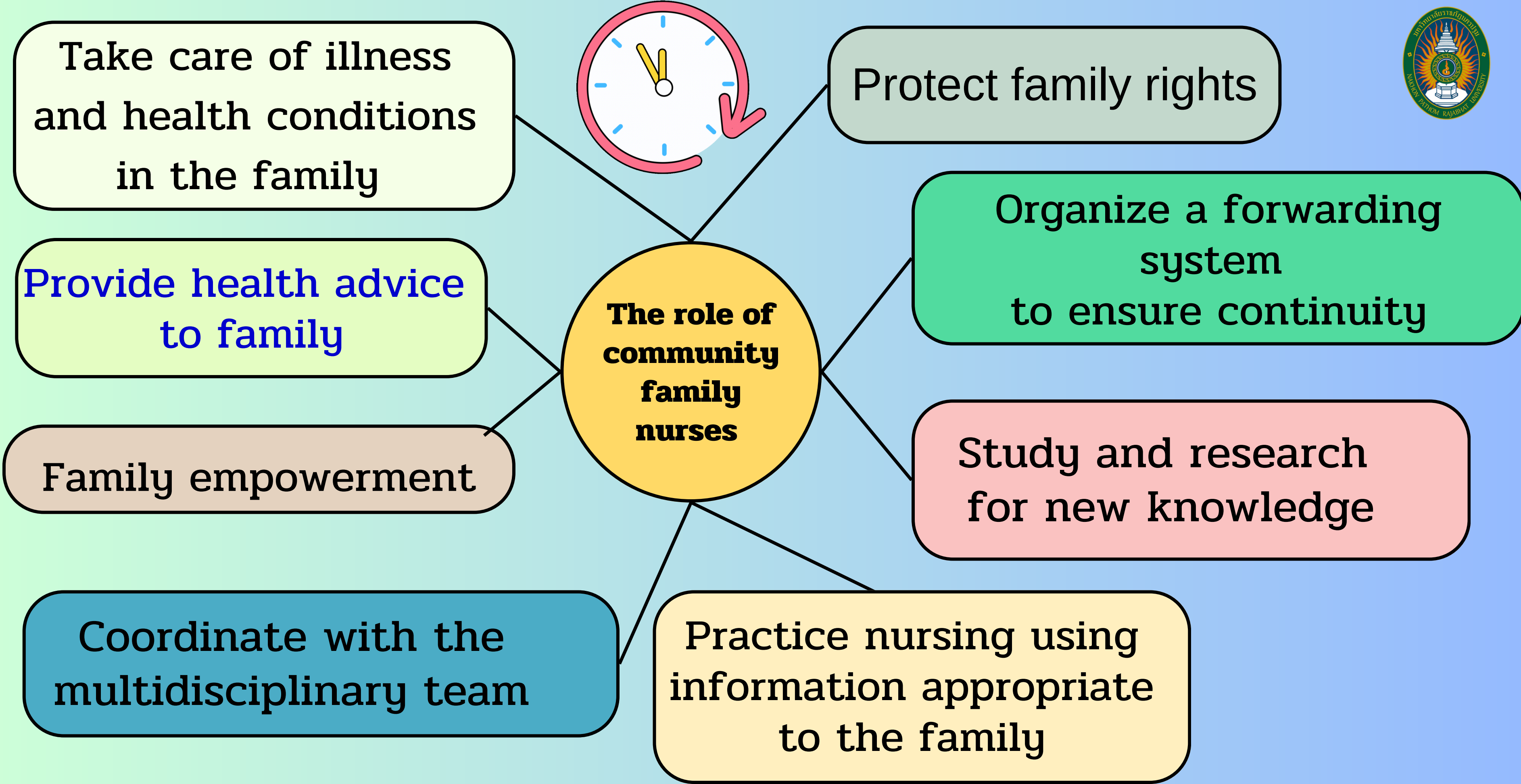
Techniques for family nursing





The role of community nurses in caring for family





Take care of illness and health conditions in the family

Protect family rights

Organize a forwarding system to ensure continuity

Study and research for new knowledge

Practice nursing using information appropriate to the family

Coordinate with the multidisciplinary team

Provide health advice to family

Family empowerment



**family
participation**

**Family nursing
center care**

**Promoting family
health**

**Promote a network
to take care of and
help family**



**Build potential and
empowerment**



Family nursing center care

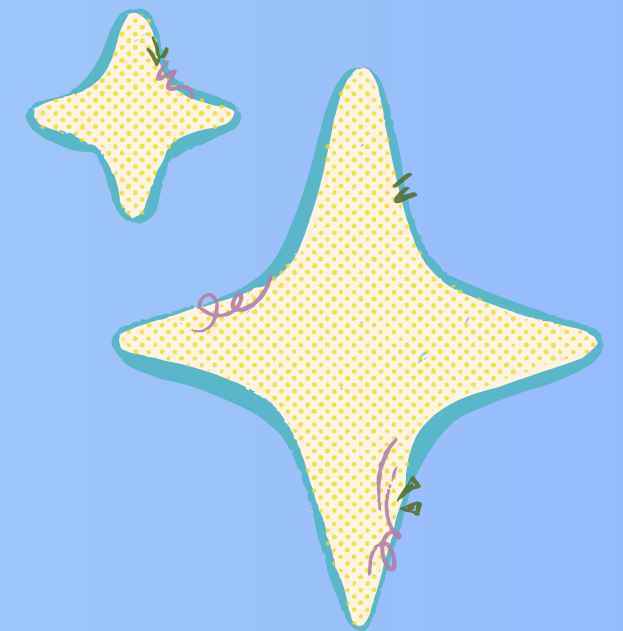
- Advocate for family
- Providing information to family
- Supporting family





Components of family nursing center care

- **Respecting and recognizing**
- **Supporting family**
- **Exchange information between family and health teams.**
- **Acceptance, honor and respect**
- **Respect for individuality**





Components of family nursing centered care

- Understanding and coordinating
- Encouraging and supporting family
- Designing a health service system





Practice family nursing center care



- Promote safety in care and provide an environment
- Involve patients and families in planning health care
- Give family the freedom to choose treatment options
- Flexible for family needs



Practice family nursing center care

- Encourage and prepare family to care for patients
- give acceptance the beliefs, values, and potential
- Do not separate patients from family or relatives.
- Encourage family members or relatives to participate

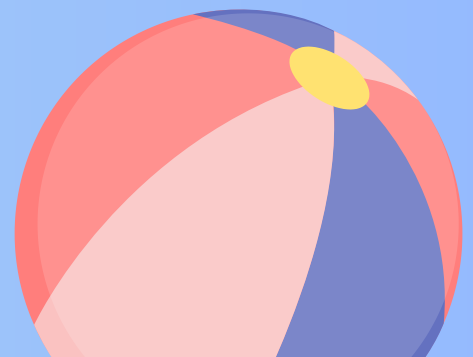




family development theory (Duvall, 1997)

1. Family period begins
2. Family begins raising children
3. Family period with preschool children
4. Family period with school-age children

5. Family period with teenage children
6. The child separated from the family.
7. Middle age family stage
8. Elderly family stage





Family period begins

Married until the wife is pregnant

- Prepare living quarters
- Plan spending systems
- Adapt and accept behavior. and adjusting to new roles
- Create a satisfying sexual





**Family begins raising
children
(birth - 2 years 6 months)**

1. Prepare arrangements for raising children
2. Plan income and spending patterns.
3. Adjust roles and responsibility at work
4. Adjust the pattern of having sex





Family period with preschool children (2 years 6 months – 6 years)

1. Prepare the area in safety.
2. Promote full growth and development.
3. Health care: prevention of children's infectious diseases, accidents in the home, relationships between siblings. Prevent child abuse and neglect



Family period with schoolage children (6 – 13 years



1. family communication system effectively.
2. Cooperate and coordinate activities especially at school.
3. Promote full growth and development.



Family period with teenage children (13-20 years)



Give importance to the good relationship



Child separated from the family



1. Change the way of life in the family. Take on the role of being a grandparent
2. return together husband and wife.



Middle age family stage (20 – 60 years)

1. Take care of the house
2. Plan for stability in later life.
3. Create a good relationship with your spouse





Elderly family stage (> 60 years)



1. Prepare home appropriately
2. Adjust spending accordingly after retirement.
3. Take care of each other between husband and wife.



Strengthening the family

- Good family relationship
- Self-reliance
- Support society and people
- Problems solving





Relationships within the family

Family self-reliance

Strong family standards

Role Family Family Function

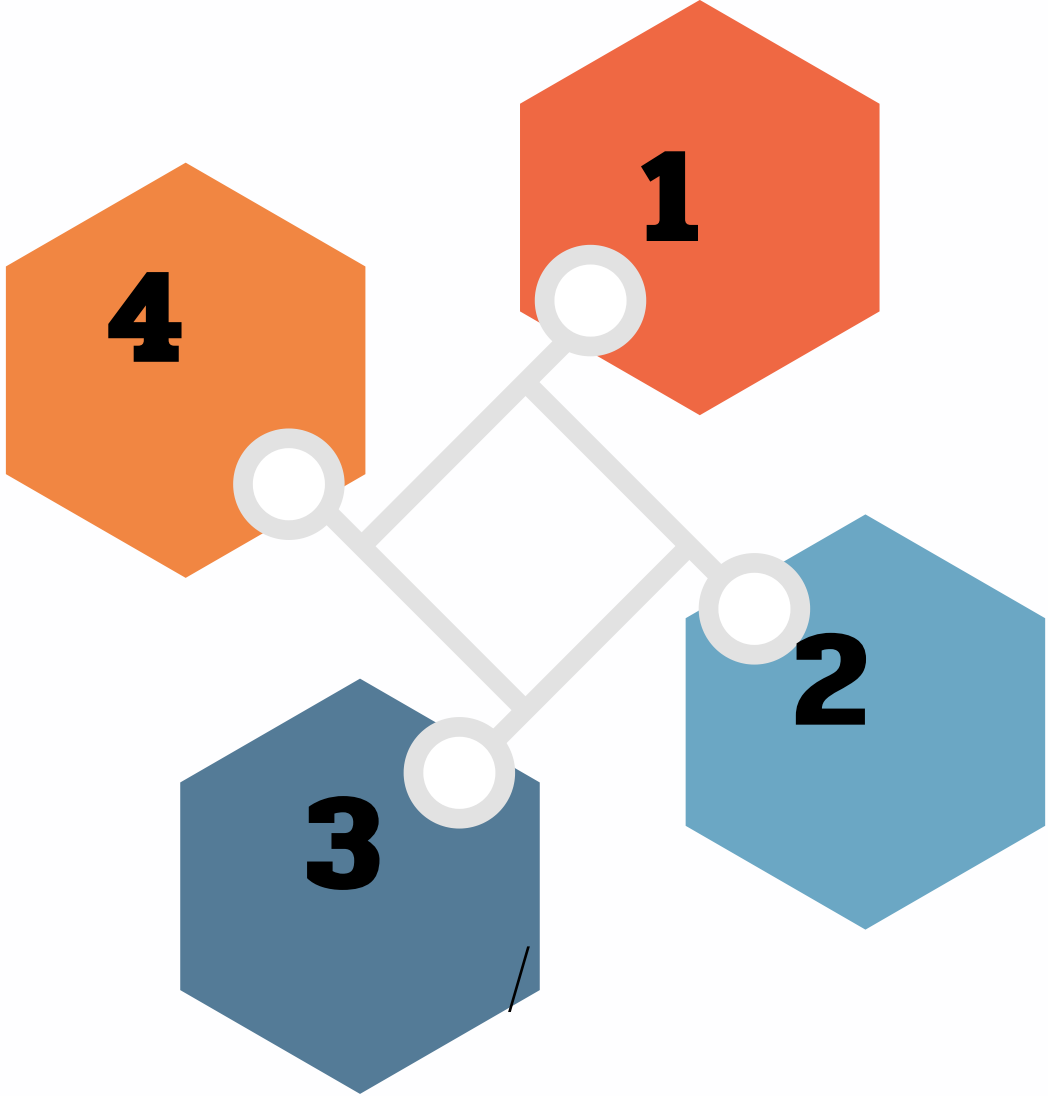
Problems solving

Avoiding risks and adjustment in difficult situations



Concept strong family

Family development through community participation



Principles of morality in the family

Raising children according to age development

Relationship in the family



Concept home health care

- health service system patients and family at home
- Promoting health
- Disease prevention
- Medical treatment
- Rehabilitation
- Patients and family are participation





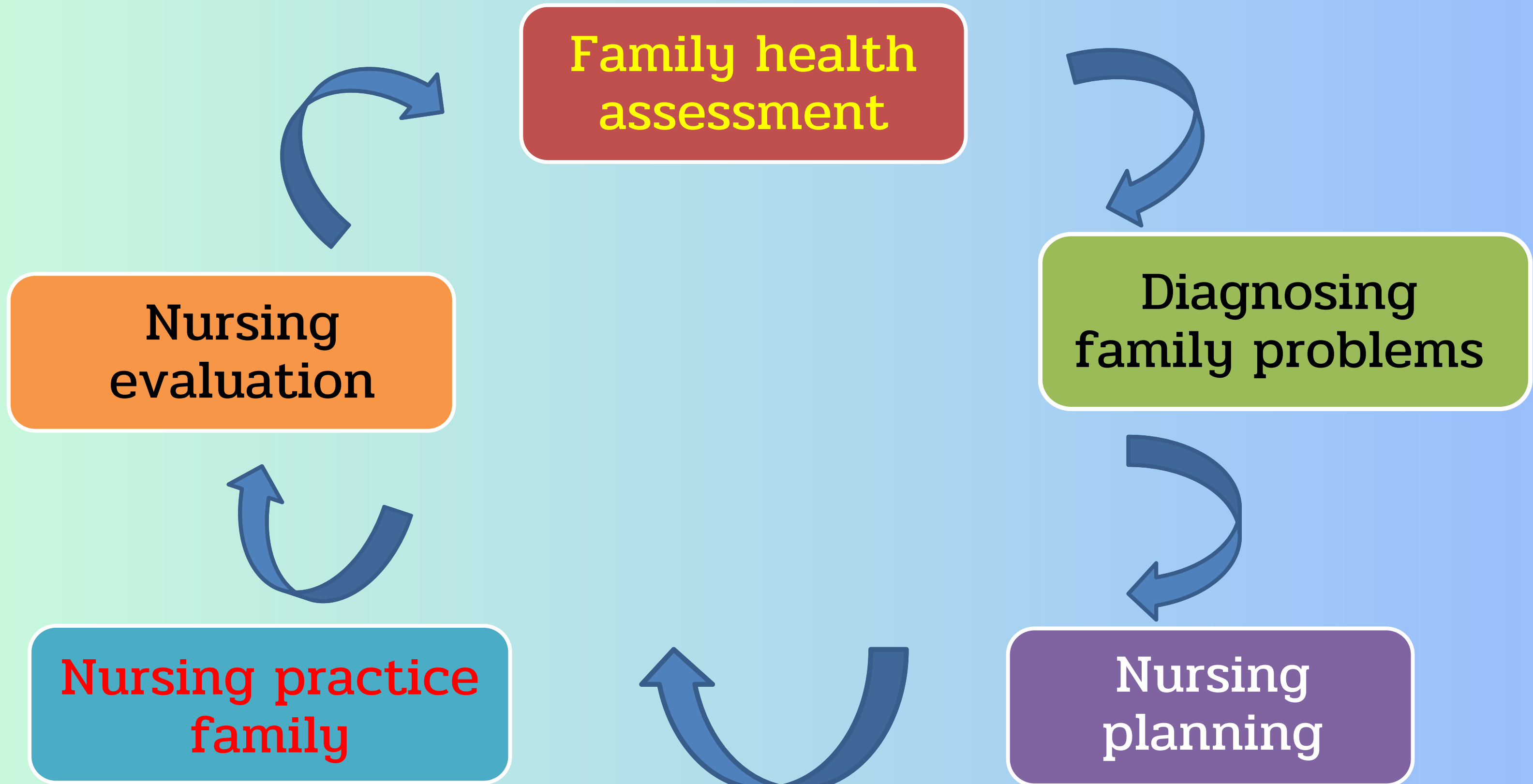
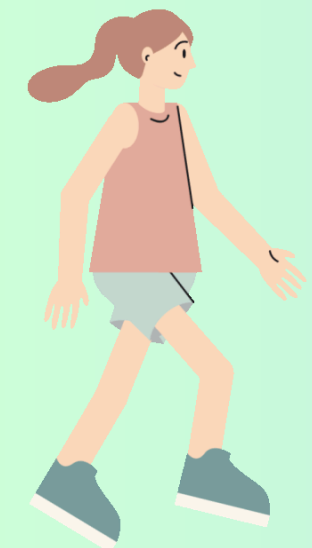
Continuing care at home

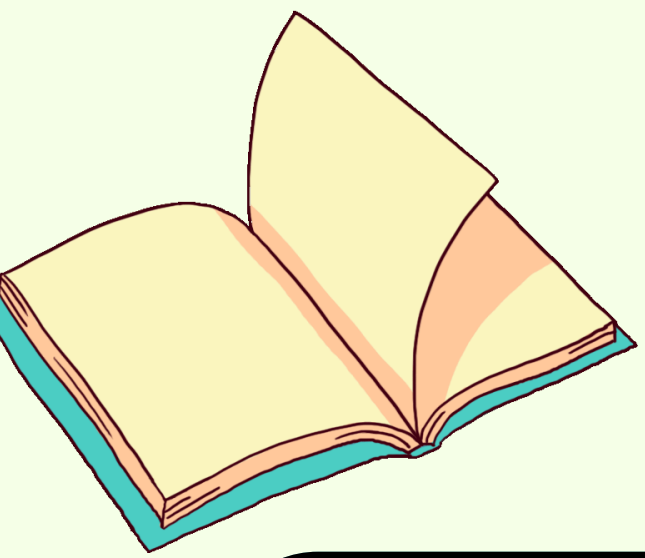
- Health assessment
- Summary of health care and implementation strategies
- Plan a home visit
- Coordination with the healthcare team
- Coordinate resources that can provide assistance





Nursing process at home and continuing care





General
information about
the family

Relationships
within and outside
the family

Sociocultural
information

**Family
assessment**

Structure,
family
environment

family
development
al stages

Genogram



Family nursing diagnosis

- Environmental dimension
- Psychosocial dimension
- Physiological dimensions
- Health behavior

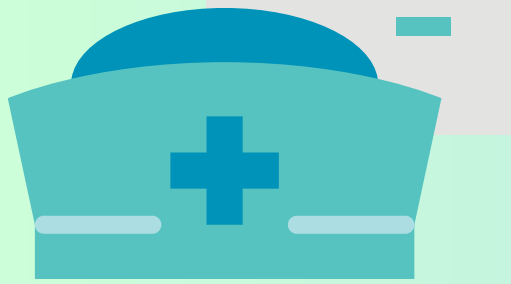


Crisis situation
Health deviation
Health threat





Nursing planning

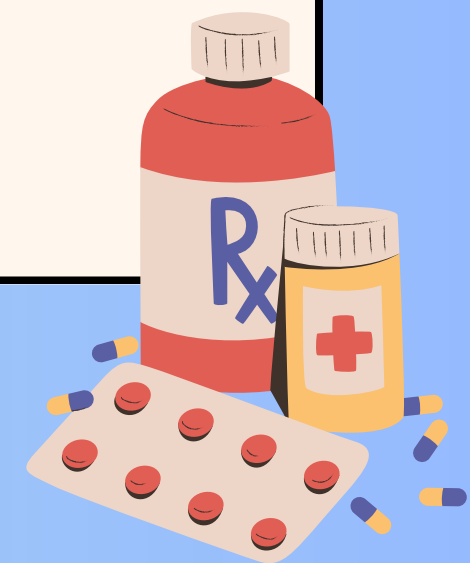


1. Family participate in planning
2. Strategies for strengthening family self-reliance
3. Nursing activities are suitable for the family
4. Family members have an obligation and motivation to follow the plan
5. There are sufficient sources of benefit in nursing practice.



Family Nursing Practice

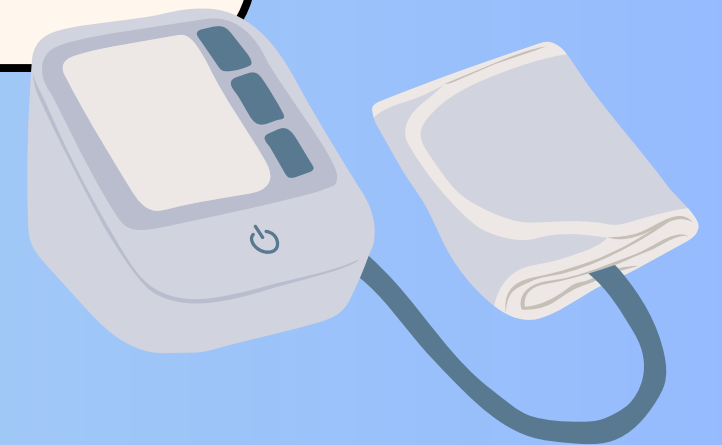
- Providing direct nursing care to family
- Changing health behaviors/lifestyle
- Increase the family's potential in caring, responsibility health
- Provide health education or counseling
- Encourage family to participate in problem solving





Nursing evaluation

- Goals that nurses and families set together
- Effects on members with health problems
- The nursing care
- The family as a whole benefits from nursing
- family interactions with the environment





มหาวิทยาลัยราชภัฏนครปฐม